

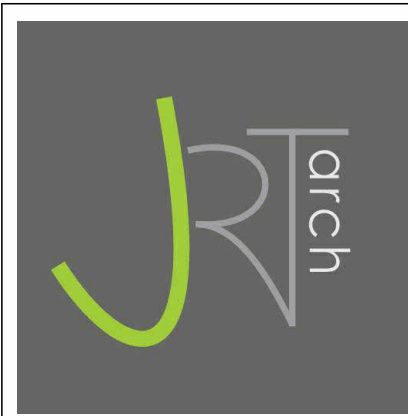


② ELEVATION - EAST - BLDG. A
1/4" = 1'-0"

-  WINDOWS
BLACK PVC
-  W.E.1
HARDIE
FIBRE CEMENT PANEL
IRON GRAY
-  W.E.2
HARDIE
1" X 6" SHIPLAP
STAINED CEDAR
-  W.E.3
HARDIE
BOARD AND BATTON
BOOTHBAY BLUE
-  W.E.4
HARDIE
PLANK
MONTEREY TAUPE



① ELEVATION - SOUTH - BLDG. A
1/4" = 1'-0"



JOYCE REID TROOST ARCHITECTURE
2515 GLENAYR DRIVE
NANAIMO, BC V9S 3R9
joyce@jrtarchitecture.com
250.714.8749
jrtarchitecture.com

THE DRAWINGS, DESIGN IDEAS AND FEATURES OF CONSTRUCTION DEPICTED HEREIN ARE THE EXCLUSIVE PROPERTY OF JOYCE REID TROOST ARCHITECT. ALL COMMON COPY AND PROPERTY RIGHTS ARE EXPRESSLY RESERVED. THEY ARE NOT TO BE REPRODUCED, COPIED, REPRODUCED OR USED FOR ANY PURPOSES NOR ARE THEY TO BE ASSIGNED TO A THIRD PARTY WITHOUT EXPRESS WRITTEN CONSENT. IN THE EVENT OF ANY UNAUTHORIZED USE OF THESE PLANS BY A THIRD PARTY, THE THIRD PARTY SHALL NOT HOLD JOYCE REID TROOST ARCHITECT RESPONSIBLE.

ARCH. STAMP
RECEIVED
DP1352
2024-SEP-19
COURTESY OF PLANITING

TOWNHOMES
991, 993, 995 & 997 Hogler Crescent
NANAIMO, BC

CLIENT
HOGLER ENTERPRISES

REV. DATE	NUMBER	DESCRIPTION
21.05.24	1	ISSUED FOR DP
02.08.25	2	RE-ISSUED FOR DP

DATE
JUNE 15, 2022
SCALE
As indicated
DRAWN: CC CHECKED: JRT APPROVED: JRT

EAST/SOUTH ELEVATIONS - BLDG. A
A200



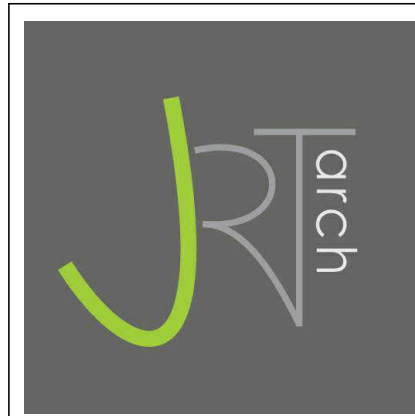
② ELEVATION - WEST BLDG. A
1/4" = 1'-0"

Material legend for the elevations:

- WINDOWS BLACK PVC
- HARDIE FIBRE CEMENT PANEL IRON GRAY
- HARDIE PLANK MONTEREY TAUPE
- HARDIE BOARD AND BATTON BOOTHBAY BLUE
- HARDIE 1" X 6" SHIPLAP STAINED CEDAR



① ELEVATION - NORTH - BLDG. A
1/4" = 1'-0"



JOYCE REID TROOST ARCHITECTURE
 2515 GLENAYR DRIVE
 NANAIMO, BC V9S 3R9
 joyce@jrtarchitecture.com
 250.714.8749
 jrtarchitecture.com

THE DRAWINGS, DESIGN IDEAS AND FEATURES OF CONSTRUCTION DEPICTED HEREIN ARE THE EXCLUSIVE PROPERTY OF JOYCE REID TROOST ARCHITECT. ALL COMMON COPY AND PROPERTY RIGHTS ARE EXPRESSLY RESERVED. THEY ARE NOT TO BE REPRODUCED, COPIED, REPRODUCED OR USED FOR ANY PURPOSES NOR ARE THEY TO BE ASSIGNED TO A THIRD PARTY WITHOUT EXPRESS WRITTEN CONSENT. IN THE EVENT OF ANY UNAUTHORIZED USE OF THESE PLANS BY A THIRD PARTY, THE THIRD PARTY SHALL NOT HOLD JOYCE REID TROOST ARCHITECT RESPONSIBLE.

ARCH. STAMP
RECEIVED
DP 1352
2024-SEP-19
CREATED BY: JRT

TOWNHOMES
 991, 993, 995 & 997 Hogler Crescent
 NANAIMO, BC

CLIENT
 HOGLER ENTERPRISES

REV. DATE	NUMBER	DESCRIPTION
21.05.24	1	ISSUED FOR DP
02.08.25	2	RE-ISSUED FOR DP

DATE: JUNE 15, 2022
 SCALE: As indicated
 DRAWN: CC CHECKED: DL APPROVED: JRT

WEST/NORTH ELEVATIONS - BLDG. A
A201



④ STREET PERSPECTIVE



JOYCE REID TROOST ARCHITECTURE
 2515 GLENAYR DRIVE
 NANAIMO, BC V9S 3R9
 joyce@jrtarchitecture.com
 250.714.8749
 jrtarchitecture.com

THE DRAWINGS, DESIGN IDEAS AND
 FEATURES OF CONSTRUCTION DEPICTED
 HEREIN ARE THE EXCLUSIVE PROPERTY OF
 JOYCE REID TROOST ARCHITECT. ALL
 COMMON COPY AND PROPERTY RIGHTS
 ARE EXPRESSLY RESERVED. THEY ARE NOT
 TO BE REPRODUCED, COPIED, REPRODUCED
 OR USED FOR ANY PURPOSES NOR ARE
 THEY TO BE ASSIGNED TO A THIRD PARTY
 WITHOUT EXPRESSED WRITTEN CONSENT.
 IN THE EVENT OF ANY UNAUTHORIZED USE
 OF THESE PLANS BY A THIRD PARTY, THE
 THIRD PARTY SHALL NOT HOLD JOYCE
 REID TROOST ARCHITECT RESPONSIBLE.

ARCH. STAMP
RECEIVED
DP1352
2024-SEP-19
 Outpost Planning

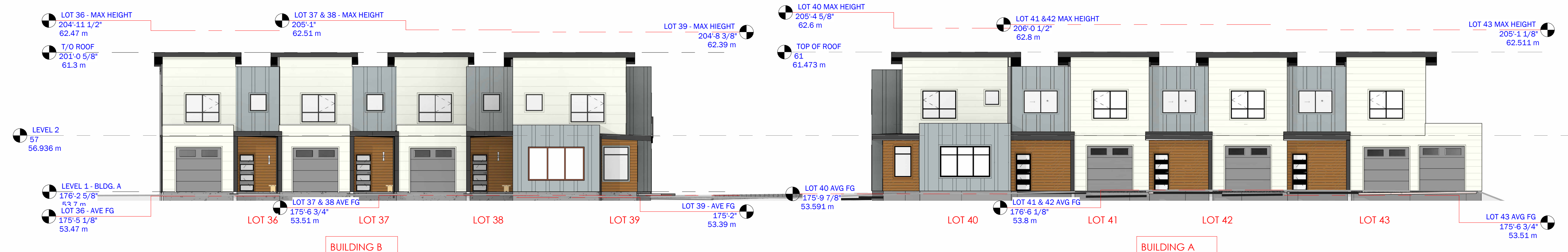
TOWNHOMES
 991, 993, 995 & 997 Hogler Crescent
 NANAIMO, BC

CLIENT
 HOGLER ENTERPRISES

REV. DATE	NUMBER	DESCRIPTION
21.05.24	1	ISSUED FOR DP
02.08.25	2	RE-ISSUED FOR DP

DATE	JUNE 15, 2022
SCALE	3/16" = 1'-0"
DRAWN: CC	CHECKED: JRT
APPROVED: JRT	

SOUTH/NORTH ELEVATIONS - BLDG.
 A - AVG FG
A202

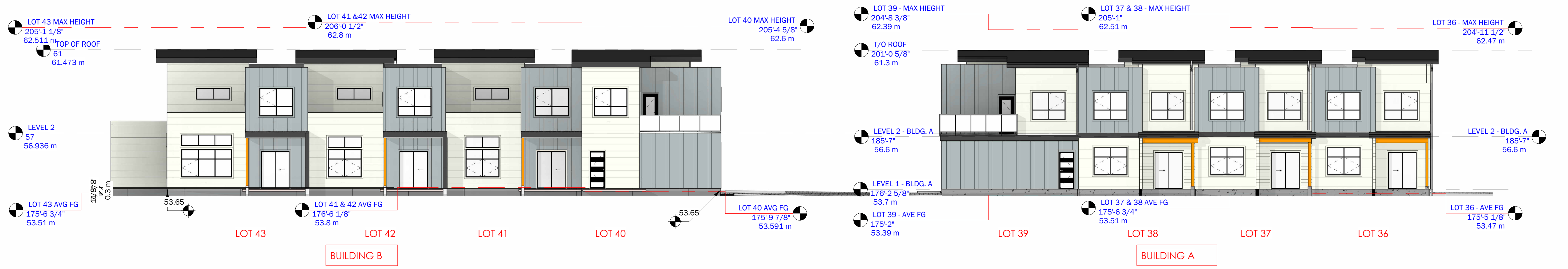


ELEVATION - NORTH - BLDG. A AND BLDG.

② B
1" = 10'-0"

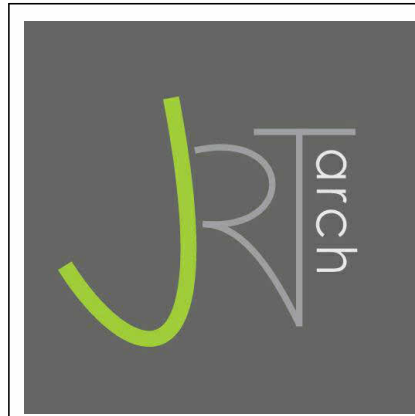


⑤ PERSPECTIVE 3



ELEVATION - SOUTH - BLDG. A AND BLDG.

① B
1" = 10'-0"



JOYCE REID TROOST ARCHITECTURE
 2515 GLENAYR DRIVE
 NANAIMO, BC V9S 3R9
 joyce@jrtarchitecture.com
 250.714.8749
 jrtarchitecture.com

THE DRAWINGS, DESIGN IDEAS AND FEATURES OF CONSTRUCTION DEPICTED HEREIN ARE THE EXCLUSIVE PROPERTY OF JOYCE REID TROOST ARCHITECT. ALL COMMON COPY AND PROPERTY RIGHTS ARE EXPRESSLY RESERVED. THEY ARE NOT TO BE REPRODUCED, COPIED, REPRODUCED OR USED FOR ANY PURPOSES NOR ARE THEY TO BE ASSIGNED TO A THIRD PARTY WITHOUT EXPRESSED WRITTEN CONSENT. IN THE EVENT OF ANY UNAUTHORIZED USE OF THESE PLANS BY A THIRD PARTY, THE THIRD PARTY SHALL NOT HOLD JOYCE REID TROOST ARCHITECT RESPONSIBLE.

ARCH. STAMP
RECEIVED
DP 1352
2024-SEP-19
 CURRENT PLANNING

TOWNHOMES
 991, 993, 995 & 997 Hogler Crescent
 NANAIMO, BC

CLIENT
 HOGLER ENTERPRISES

REV. DATE	NUMBER	DESCRIPTION
21.05.24	1	ISSUED FOR DP
02.08.25	2	RE-ISSUED FOR DP

DATE
 JUNE 15, 2022
 SCALE
 1" = 10'-0"
 DRAWN: CC CHECKED: JRT APPROVED: JRT

SOUTH/NORTH ELEVATIONS - BLDG. A AND BLDG. B
A203